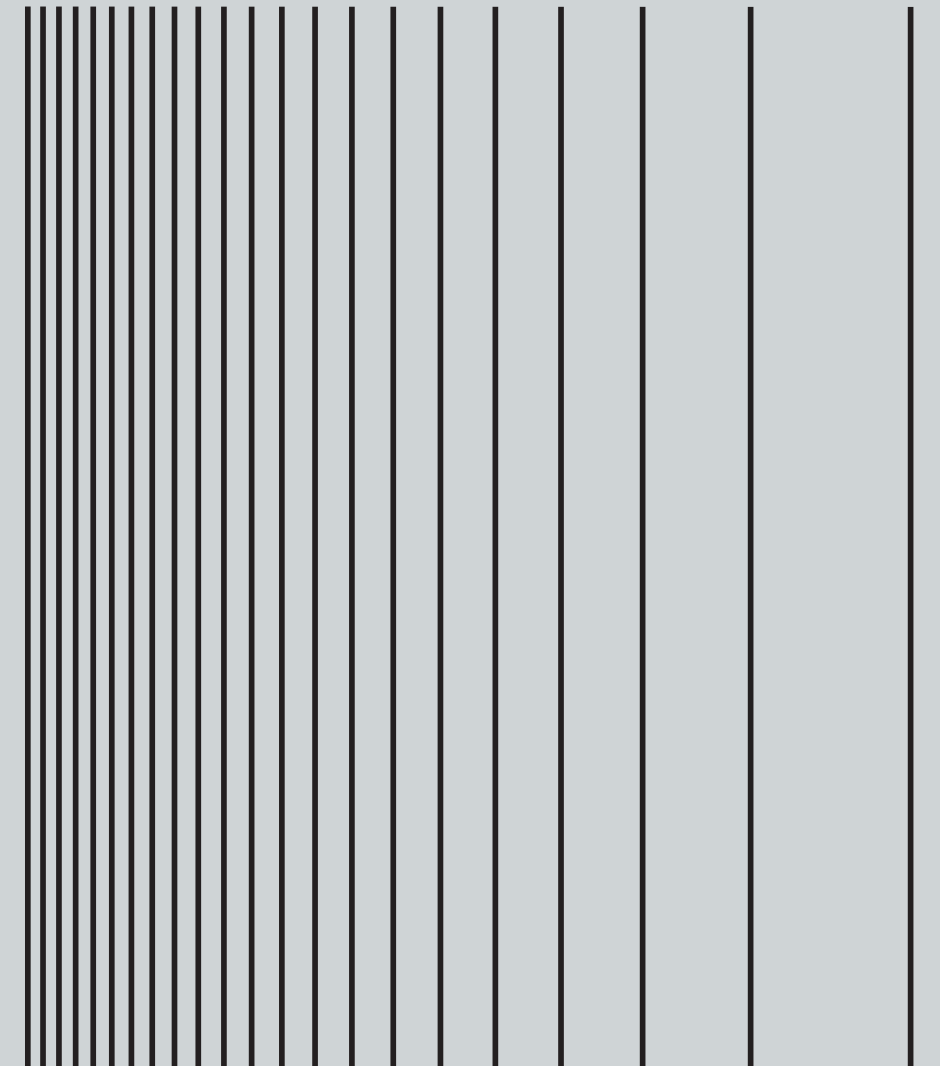


LARGEST PAVILION OF
FULLBODY TILES



Brand Narrative

At MARFIL TILES, we are the masters of full body vitrified tiles manufacturing, setting new standards of success and innovation. With our state-of-the-art facilities and a team of skilled artisans, we craft tiles that embody perfection in every detail. With our cutting-edge technology and innovative processes, we bring forth a range of tiles that exceed expectations and redefine industry standards. From striking designs to impeccable finishes, our full body vitrified tiles redefine the aesthetics of spaces, transforming them into extraordinary works of art. With our extensive range of colors, textures, and sizes, we offer endless possibilities to architects, designers, and homeowners alike.

Join us on this extraordinary journey of transforming spaces, where our brand tale of passion, ingenuity, and success unfolds. Let us inspire your imagination, elevate your designs, and be the partner you can trust on your path to greatness. Experience the zenith of full body vitrified tiles manufacturing with MARFIL TILES. Together, let's create a legacy of exceptional spaces that leave a lasting impression.



COLLECTION

FULLBODY 9MM	01
FULLBODY 15MM	53
STEP COLLECTION	67
CHROMATIC	73



Discover endless inspiration and a diverse range of full-body tiles. Explore our collection as it is made up from natural material, tailored to your style.



INSPIRATION & VARIETY OF FULLBODY TILES

Explore the fusion of nature's splendor and innovative design with our diverse range of full-body tiles.

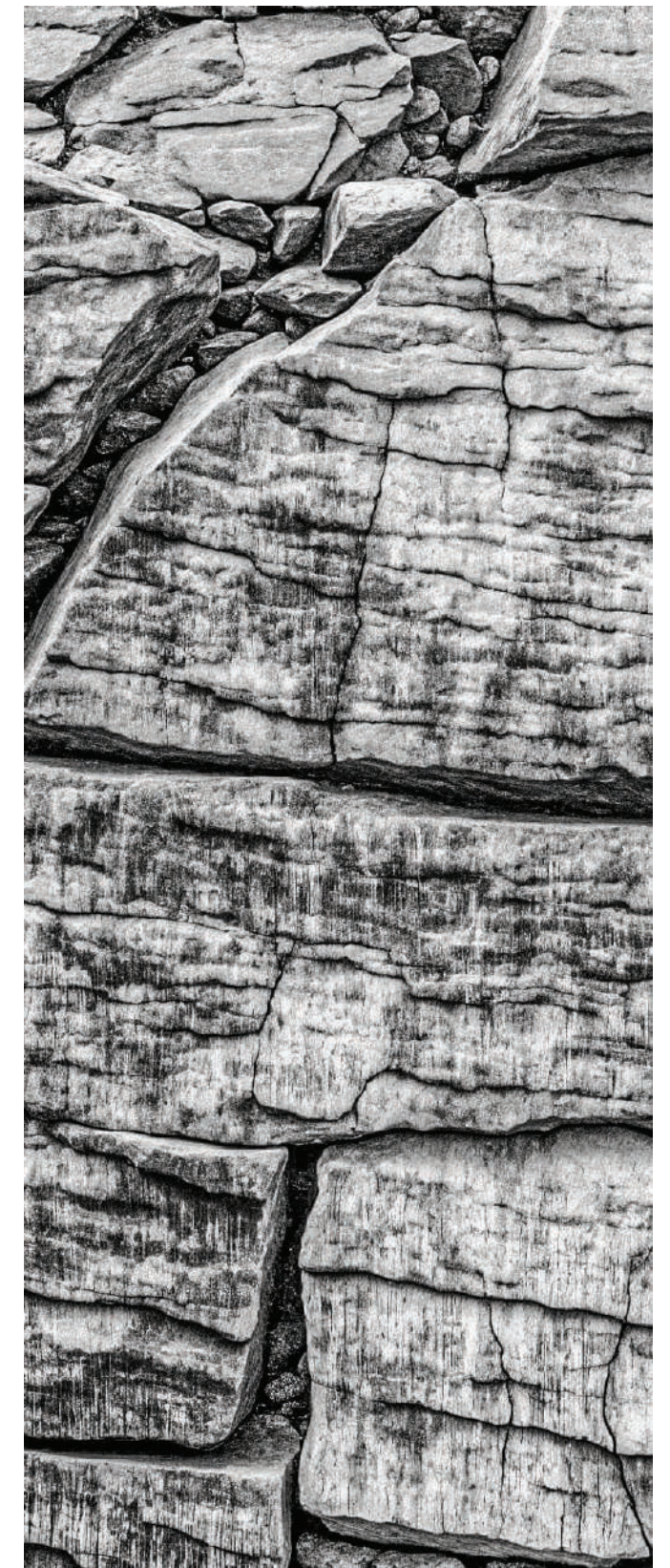
From rugged landscapes to tranquil shores, each tile is crafted to embody the essence of nature, offering limitless inspiration for your space.



INSPI- RATION

BEYOND THE NATURE

Draw inspiration from nature's rugged beauty. Our tiles evoke the essence of rocky landscapes and majestic mountains, bringing natural tranquility to your space.



THE PROCESS OF FULLBODY TILES

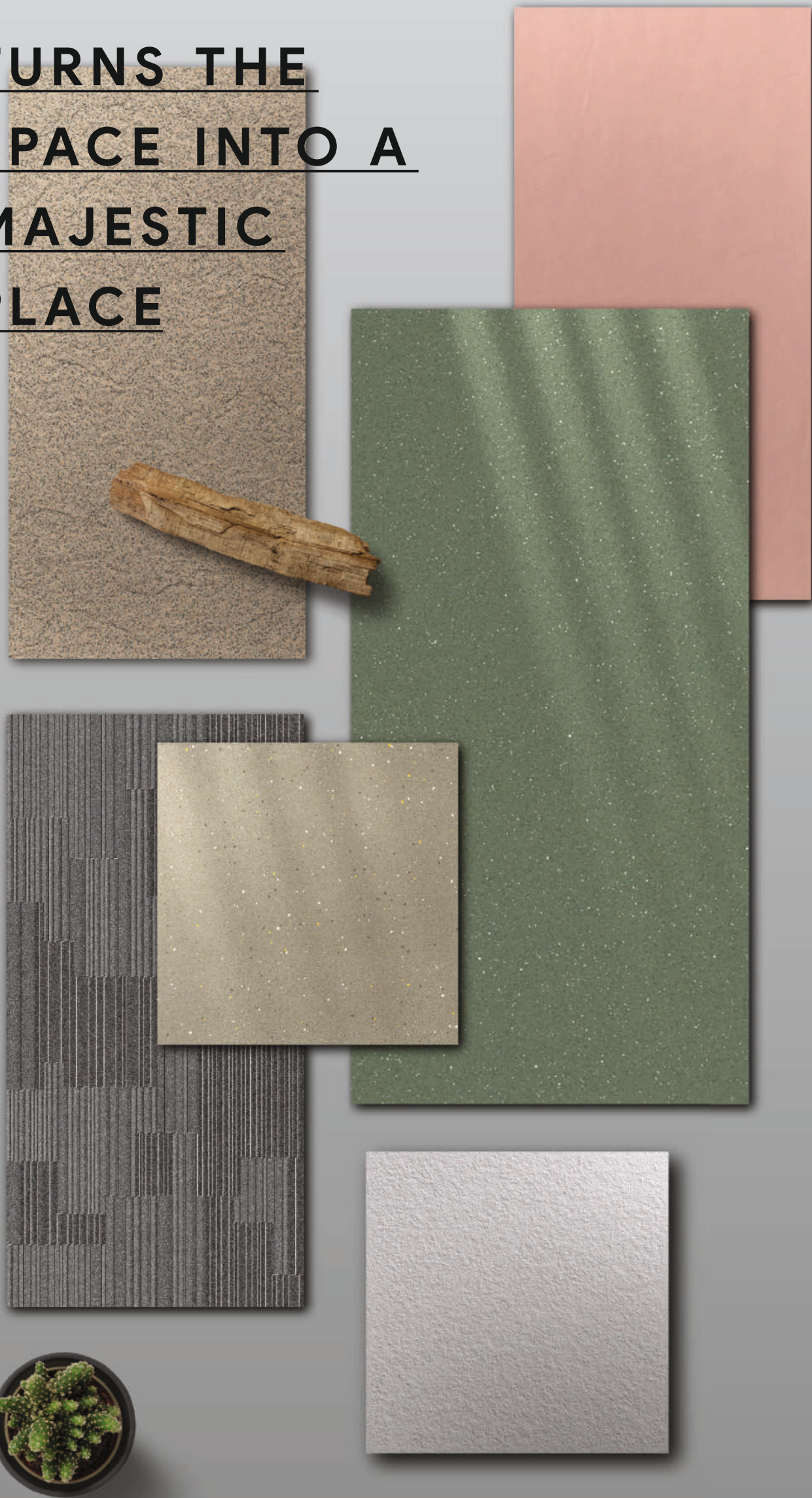
Full-body tiles, also known as technical porcelain, undergo a meticulous manufacturing process that ensures their durability and aesthetic appeal. These tiles are crafted by blending clay, feldspar, quartz, and silica at elevated temperatures. Throughout this process, grains of the desired color are integrated into the base tile mixture, resulting in a uniform color distribution across the entire tile. To maintain the integrity of the composition, raw materials are stored in dedicated silos to prevent impurities from compromising the quality. In the manufacturing facility, raw materials for both the base color and the grains are carefully measured and stored in tanks.

Stringent specifications are continuously monitored to ensure consistency and quality. The precise mixture is then passed through a sieve, where the finest particles settle on a conveyor belt. This meticulous sieving process guarantees the production of superior-quality tiles with uniform texture and color. Following the sieving process, the mixture undergoes pressing, where it is compacted into molds under high pressure. This compression ensures that the tiles have a dense structure, enhancing their strength and durability.

The molded tiles are then given a punch effect and then subjected to firing in kilns at extremely high temperatures, allowing the materials to fuse together and solidify. Once the firing process is complete, the tiles undergo rigorous quality control inspections to detect any imperfections. Skilled technicians meticulously examine each tile for defects, ensuring that only flawless products reach the market. Finally, the tiles are carefully packaged and prepared for distribution to customers, ready to adorn residential and commercial spaces with their beauty and resilience.



URNS THE
SPACE INTO A
MAJESTIC
PLACE



FULJ BODY
VITRIFIED TILES

BRING THE GLORIOUS
CHARM WITH
ENDURANCE AND
GREAT FINISH

→ ←
9MM, 15MM
600X600MM

→ ←
9MM
600X1200MM

→ ←
9MM
800X1600MM

→ ←
9MM
300X1200MM

Designed to offer maximum flexibility, our tiles are available in three different sizes and come in two thickness options, catering to a wide range of design preferences seamlessly. Whether your aim is to make a striking impression or achieve a refined sophistication, our collection ensures a precise match for any environment. With diverse thicknesses tailored to various uses, spanning from flooring to wall installations, our tiles deliver unparalleled versatility, positioning them as the preferred selection for those pursuing excellence, elegance, and practicality in their interior design projects.

ULTIMATE FEATURES FOR EXCITING LIFESTYLE

Revolutionize your living space with tiles tailored for an exceptional lifestyle. With an antimicrobial surface, hygiene is effortlessly maintained. Superior stain resistance ensures easy upkeep, while heat-resistant properties promise durability in diverse environments. Simplify maintenance with easy-care features, perfect for bustling spaces. From kitchens to bathrooms, our tiles seamlessly blend functionality with elegance, offering a versatile solution for every area of your home, ensuring both style and peace of mind for a vibrant lifestyle.



Anti-microbial hygienic surface

The surface prevents microbial growth for enhanced hygiene.



Ultra-high heat resistance

Resists heat efficiently for use in kitchen & dining spaces.



Superior stain resistance

Resists stains & stays new-looking for longer.



Easy to clean

Requires no extra efforts to clean & routine cleaning is enough



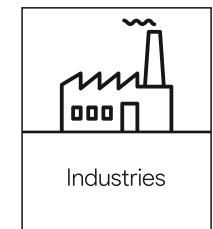
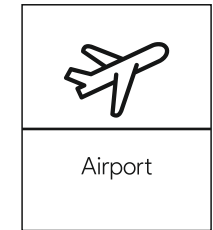
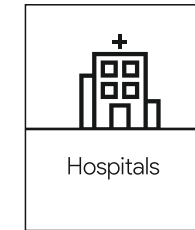
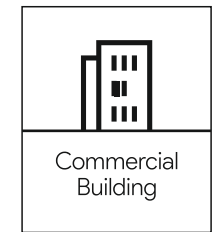
Resists UV rays

UV rays don't alter or damage the color & form of the surfaces.



RANGE OF POSSIBLE APPLICATION

Explore the versatility of our tiles across schools, restaurants, hotels, residential spaces, industries, commercial areas, and more. From high-traffic environments to spaces requiring aesthetic appeal, our tiles offer the perfect solution. With a diverse range designed to meet various needs, they seamlessly blend functionality with style, enhancing the ambiance of any setting they adorn, ensuring a transformative experience for every space they grace.



→ ←
9MM

600X600MM | 600X1200MM | 800X1600MM

**EXPLORE THE WORLD OF
MAGNIFICENT SURFACE**

Elegantly crafted tiles captivate everyone with
lavish finish and epic shades.

FULJ BODY
VITRIFIED TILES



DOLPHIN



600x1200mm

● STONE PUNCH



● POLISHED FINISH



● LINEA PUNCH

● MATT FINISH



● STRAPES PUNCH

800x1600mm

● POLISHED FINISH



● MATT FINISH



THICKNESS 9MM



CHEMICAL
RESISTANCE



MAINTENANCE
FREE



HIGH
STRENGTH



DOLPHIN

FULL BODY
VITRIFIED TILES

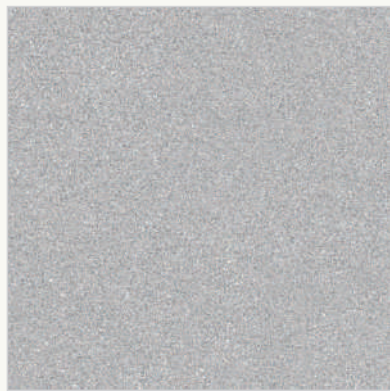
LARGEST PAVILION OF
FULLBODY TILES

600x600mm

● POLISHED FINISH



● MATT FINISH



● ROCK PUNCH



HIGH
STRENGTH



MAINTENANCE
FREE



CHEMICAL
RESISTANCE



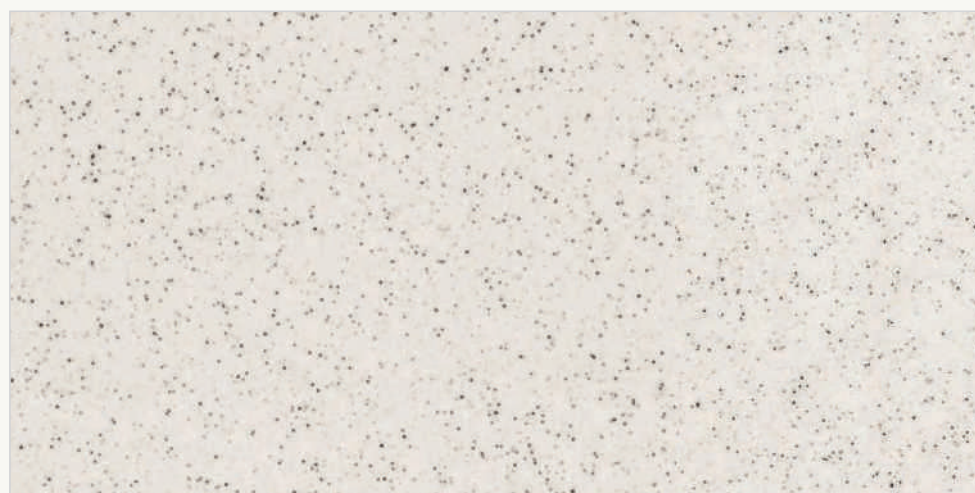
DOLPHIN
[ROCK PUNCH]

DOLOMINE



800x1600mm

● POLISHED FINISH



● MATT FINISH



THICKNESS 9MM



HIGH STRENGTH



MAINTENANCE FREE



CHEMICAL RESISTANCE

LARGEST PAVILION OF FULLBODY TILES

600x1200mm

● POLISHED FINISH



● MATT FINISH



● STONE PUNCH

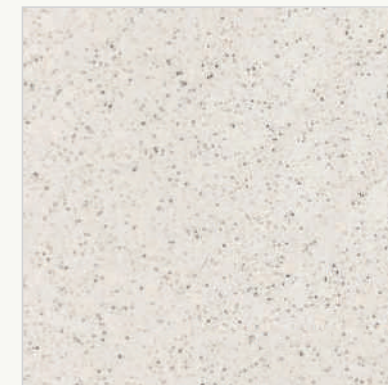
● LINEA PUNCH



● STRAPES PUNCH

600x600mm

● POLISHED FINISH



● MATT FINISH



BUTTER



LARGEST PAVILION OF FULLBODY TILES

600x1200mm | 600X600MM



BUTTER
[POLISHED FINISH]

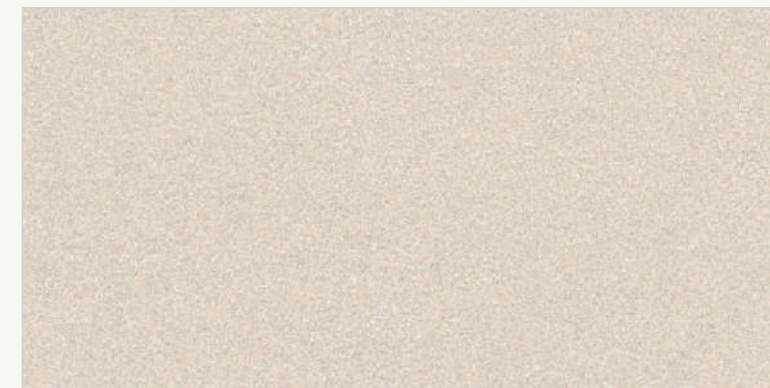
☉ POLISHED FINISH



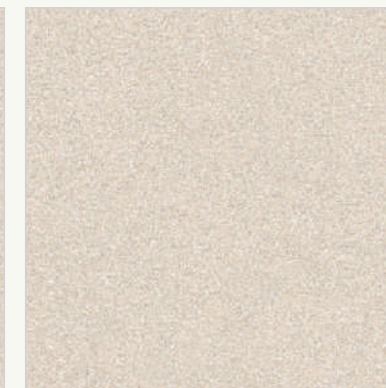
☉ POLISHED FINISH



● MATT FINISH



● MATT FINISH



800x1600mm

☉ POLISHED FINISH



● MATT FINISH



THICKNESS 9MM



CHEMICAL RESISTANCE



MAINTENANCE FREE



HIGH STRENGTH



NUT BROWN

600x600mm

● POLISHED FINISH



● MATT FINISH



● ROCK PUNCH



HIGH
STRENGTH



MAINTENANCE
FREE



CHEMICAL
RESISTANCE



NUT BROWN
[MATT FINISH]



APRICOT



600x1200mm

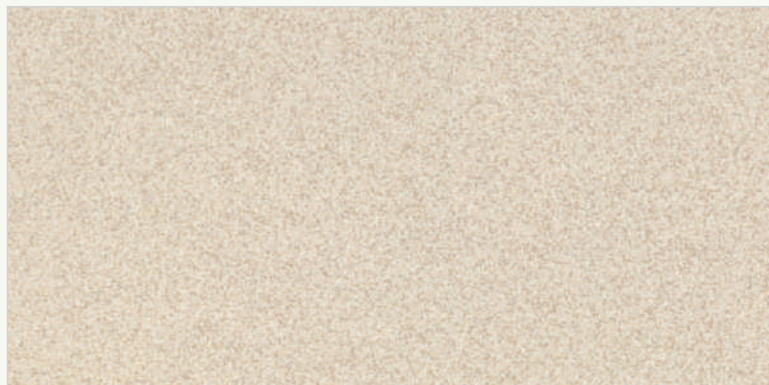
● POLISHED FINISH



● STONE PUNCH



● MATT FINISH



● LINEA PUNCH



-  CHEMICAL RESISTANCE
-  MAINTENANCE FREE
-  HIGH STRENGTH

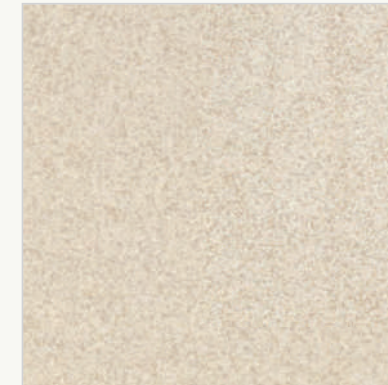


● STRAPES PUNCH

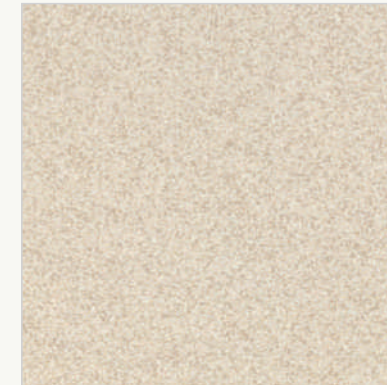
LARGEST PAVILION OF FULLBODY TILES

600x600mm

● POLISHED FINISH



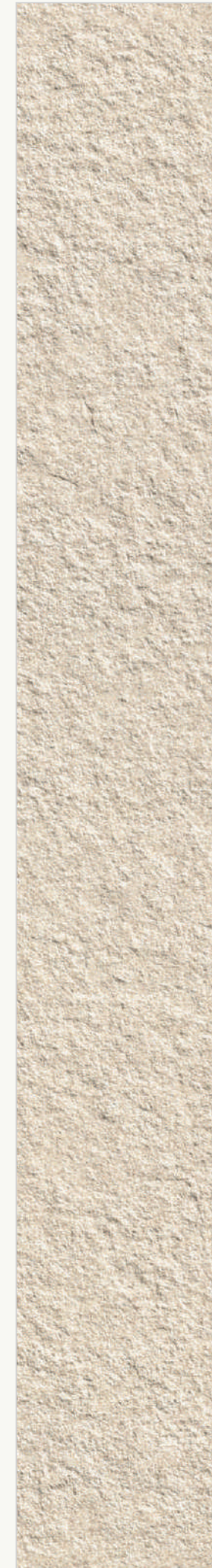
● MATT FINISH



● ROCK PUNCH



APRICOT
[ROCK PUNCH]



GRAPHITE



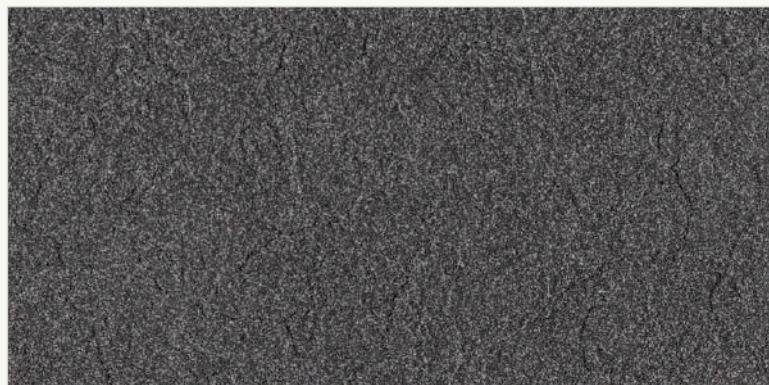
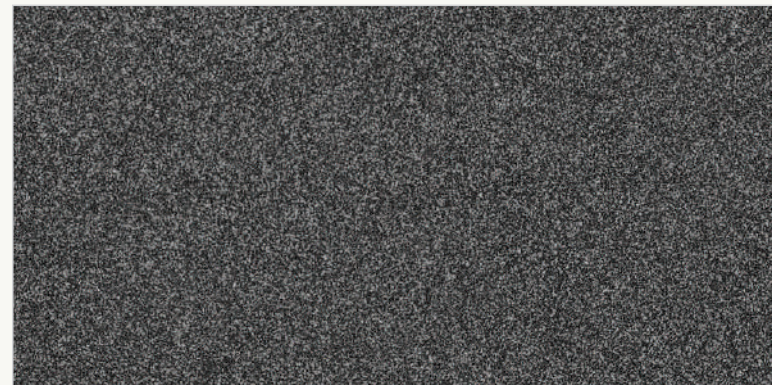
GRAPHITE
[MATT FINISH]

600x1200mm

● POLISHED FINISH



● MATT FINISH



● STONE PUNCH

● LINEA PUNCH



● STRAPES PUNCH

-  CHEMICAL RESISTANCE
-  MAINTENANCE FREE
-  HIGH STRENGTH

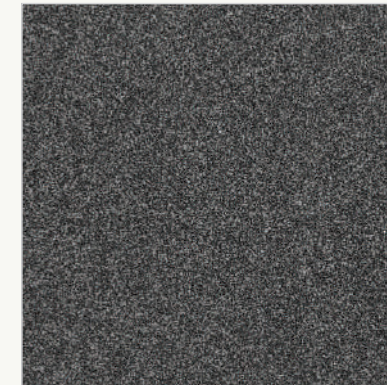
LARGEST PAVILION OF FULLBODY TILES

600x600mm

● POLISHED FINISH



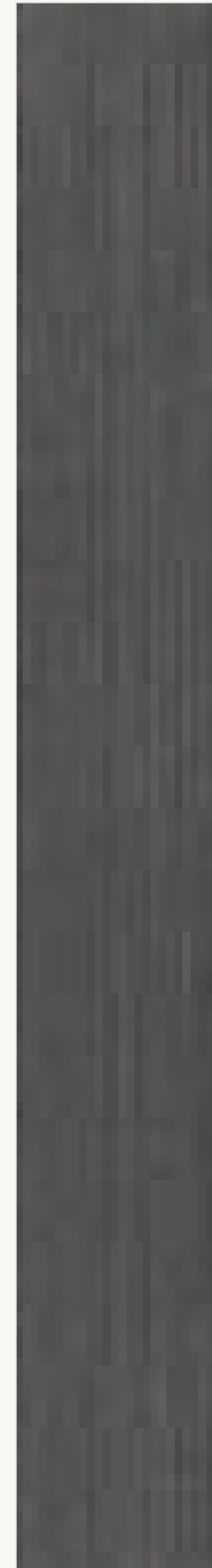
● MATT FINISH



● ROCK PUNCH



GRAPHITE
[POLISHED FINISH]



SMOKE

LARGEST PAVILION OF FULLBODY TILES



600x1200mm | 600x600mm

● MATT FINISH



● MATT FINISH



THICKNESS 9MM



CHEMICAL
RESISTANCE



MAINTENANCE
FREE



HIGH
STRENGTH



MUD

600x600mm

● POLISHED FINISH



● MATT FINISH



● ROCK PUNCH



HIGH
STRENGTH



MAINTENANCE
FREE



CHEMICAL
RESISTANCE



MUD
[POLISHED FINISH]



COOKIE



600x1200mm | 600x600mm

● POLISHED FINISH



● POLISHED FINISH



● MATT FINISH



● MATT FINISH



CHEMICAL
RESISTANCE



MAINTENANCE
FREE

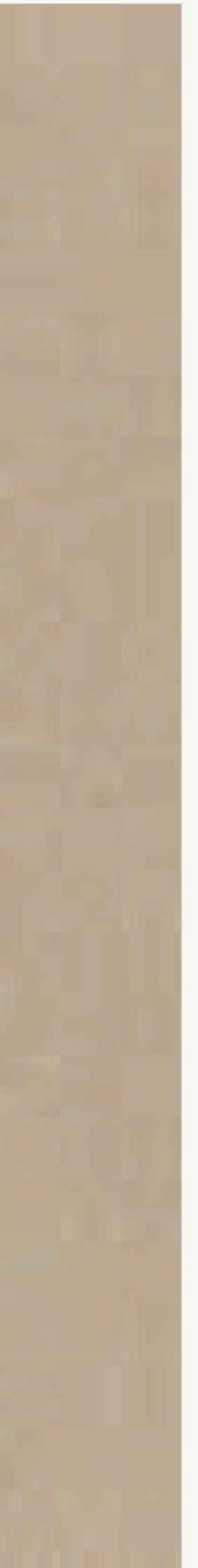


HIGH
STRENGTH



THICKNESS 9MM

LARGEST PAVILION OF FULLBODY TILES



BOURBON

600x1200mm | 600x600mm

● POLISHED FINISH



● MATT FINISH



● POLISHED FINISH



● MATT FINISH



HIGH
STRENGTH



MAINTENANCE
FREE



CHEMICAL
RESISTANCE



BOURBON
[POLISHED FINISH]

MUSHROOM

FULJ BODY
VITRIFIED TILES



MUSHROOM
[POLISHED FINISH]



THICKNESS 9MM



HIGH
STRENGTH



MAINTENANCE
FREE



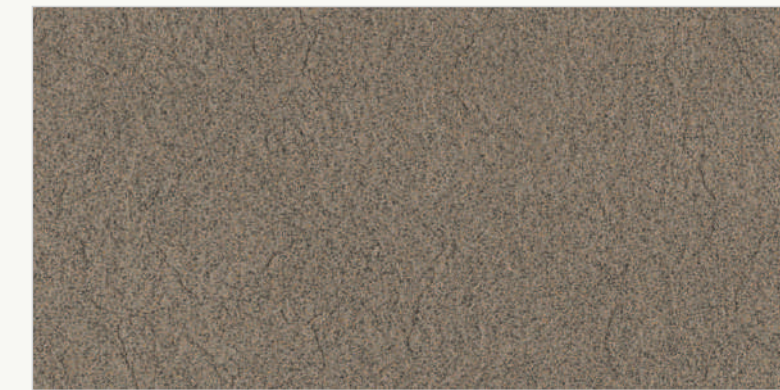
CHEMICAL
RESISTANCE

600x1200mm

● POLISHED FINISH



● MATT FINISH



● STONE PUNCH

● LINEA PUNCH

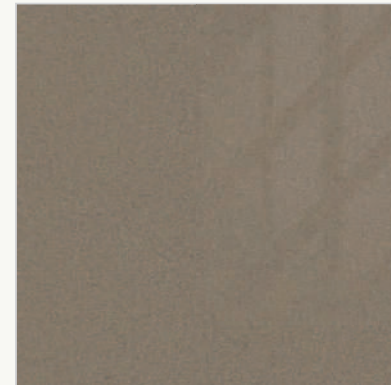
800x1600mm | 600x600mm

● POLISHED FINISH



● MATT FINISH

● POLISHED FINISH



● MATT FINISH



● STRAPES PUNCH



MUSHROOM
[STONE PUNCH]

TERRAIN

600x1200mm

● POLISHED FINISH



● MATT FINISH



● POLISHED FINISH



THICKNESS 9MM



HIGH
STRENGTH



MAINTENANCE
FREE



CHEMICAL
RESISTANCE

● MATT FINISH



TERRAIN
[MATT FINISH]

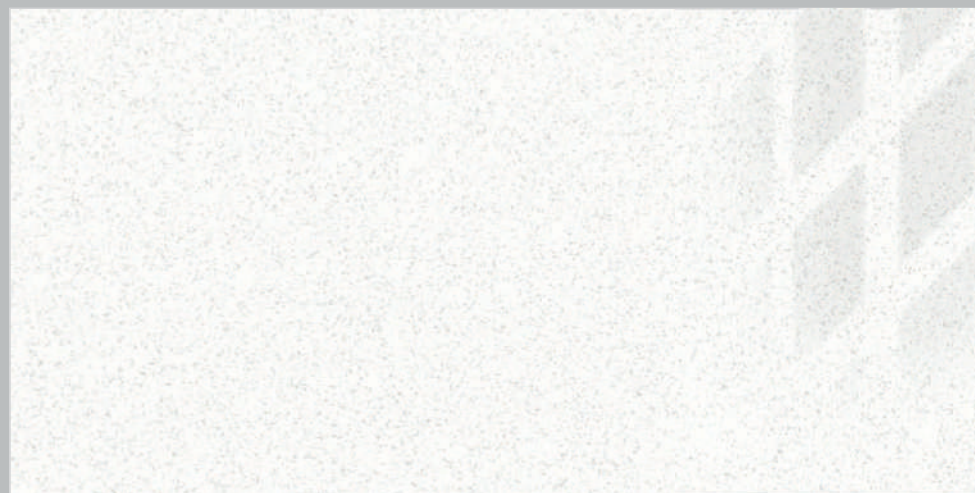
ALPINE WHITE

LARGEST PAVILION OF FULLBODY TILES

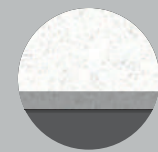
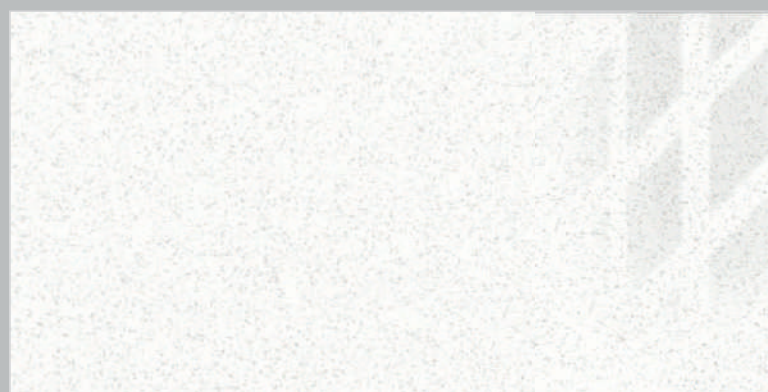


800x1600mm | 600x1200mm

● POLISHED FINISH



● POLISHED FINISH



THICKNESS 9MM



HIGH
STRENGTH



MAINTENANCE
FREE



CHEMICAL
RESISTANCE



ALPINE WHITE
[POLISHED FINISH]

FOREST



FOREST
[MATT FINISH]

800x1600mm

POLISHED FINISH



MATT FINISH



THICKNESS 9MM



HIGH
STRENGTH



MAINTENANCE
FREE



CHEMICAL
RESISTANCE

LARGEST PAVILION OF FULLBODY TILES

600x1200mm

POLISHED FINISH

MATT FINISH



FOREST
[POLISHED FINISH]

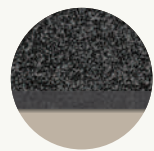
GALAXY

800x1600mm

● POLISHED FINISH



● MATT FINISH



THICKNESS 9MM



HIGH
STRENGTH



MAINTENANCE
FREE



CHEMICAL
RESISTANCE

FULJ BODY
VITRIFIED TILES

LARGEST PAVILION OF
FULLBODY TILES



GALAXY
[MATT FINISH]

STEEL GREY

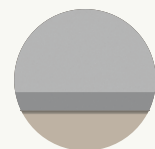


800x1600mm

● POLISHED FINISH



● MATT FINISH



THICKNESS 9MM



CHEMICAL RESISTANCE



MAINTENANCE FREE



HIGH STRENGTH

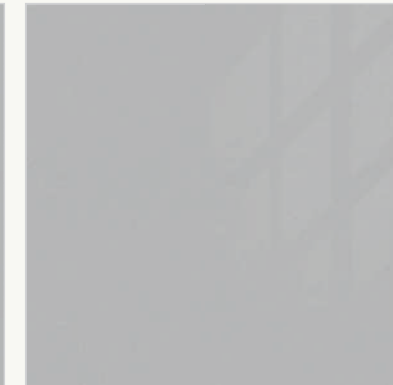
LARGEST PAVILION OF FULLBODY TILES

600x1200mm | 600X600MM

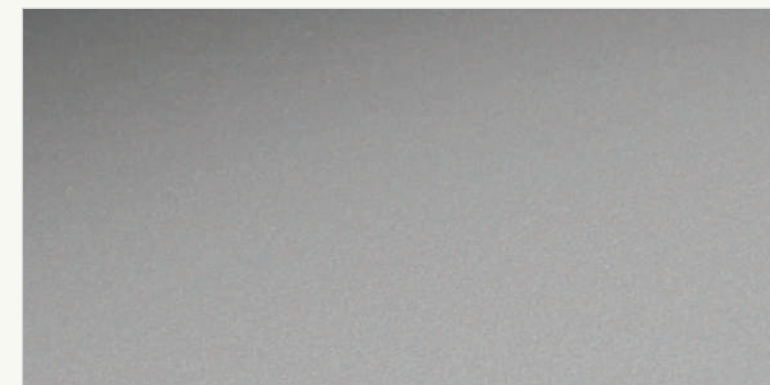
● POLISHED FINISH



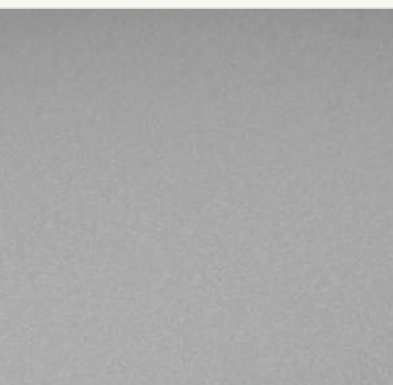
● POLISHED FINISH



● MATT FINISH



● MATT FINISH



SLATE GREY



SLATE GREY
[MATT FINISH]

LARGEST PAVILION OF FULLBODY TILES

600x1200mm

● MATT FINISH



● STONE PUNCH



● LINEA PUNCH



● STRAPES PUNCH

800x1600mm

● MATT FINISH



-  CHEMICAL RESISTANCE
-  MAINTENANCE FREE
-  HIGH STRENGTH

600x600mm

● MATT FINISH



● ROCK PUNCH

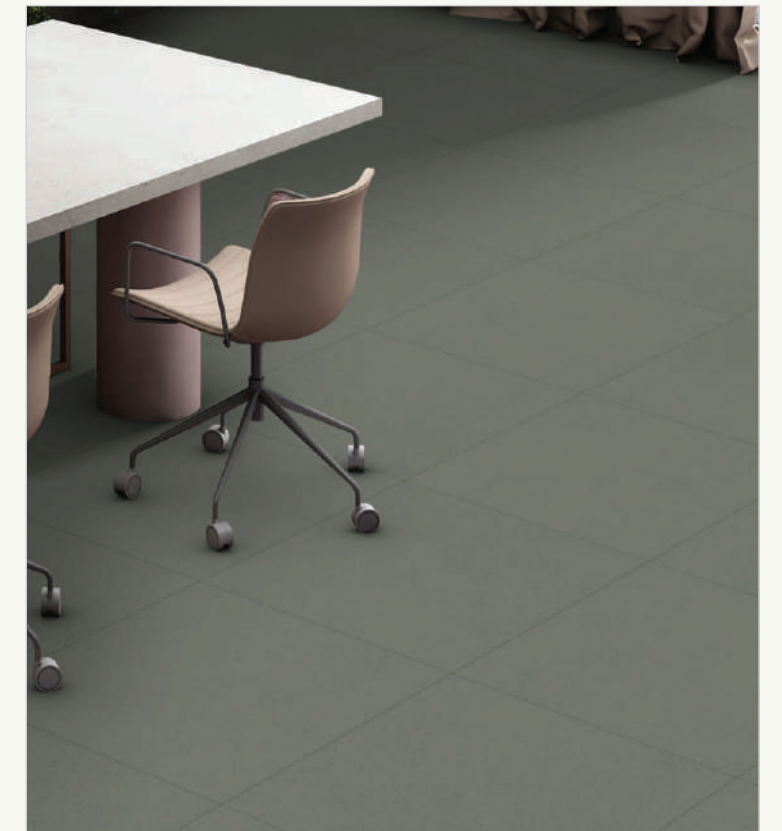
COTTA

600x1200mm | 600x600mm

● MATT FINISH



● MATT FINISH



CHARCOAL BLACK



CHARCOAL BLACK
[POLISHED FINISH]

800x1600mm

POLISHED FINISH



MATT FINISH



THICKNESS 9MM



HIGH
STRENGTH



MAINTENANCE
FREE



CHEMICAL
RESISTANCE

LARGEST PAVILION OF FULLBODY TILES

600x1200mm

POLISHED FINISH



MATT FINISH



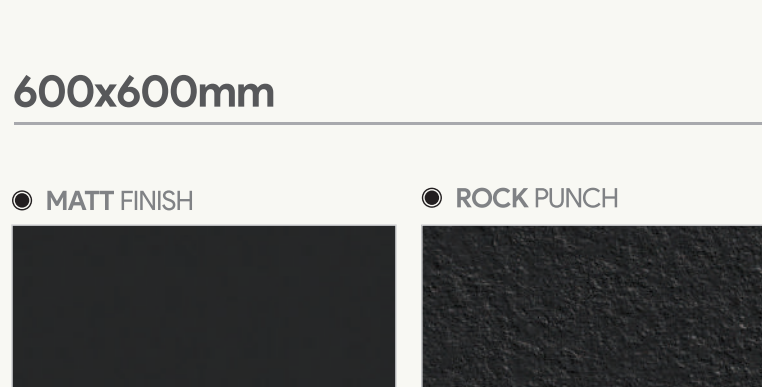
STONE PUNCH



LINEA PUNCH



STRAPES PUNCH

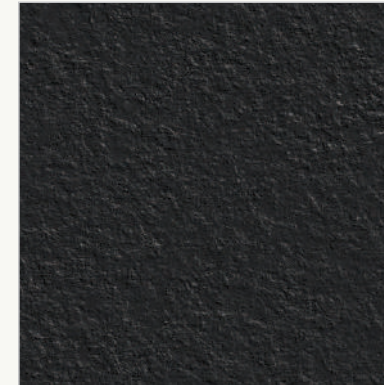


600x600mm

MATT FINISH



ROCK PUNCH



SNOW WHITE

LARGEST PAVILION OF FULLBODY TILES

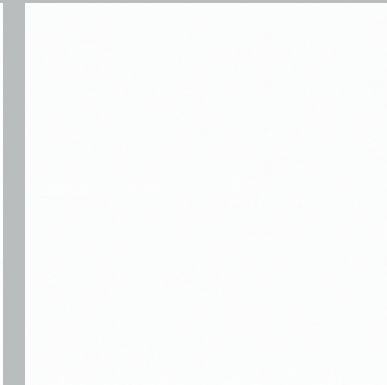
600x600mm



SNOW WHITE
[POLISHED FINISH]

POLISHED FINISH

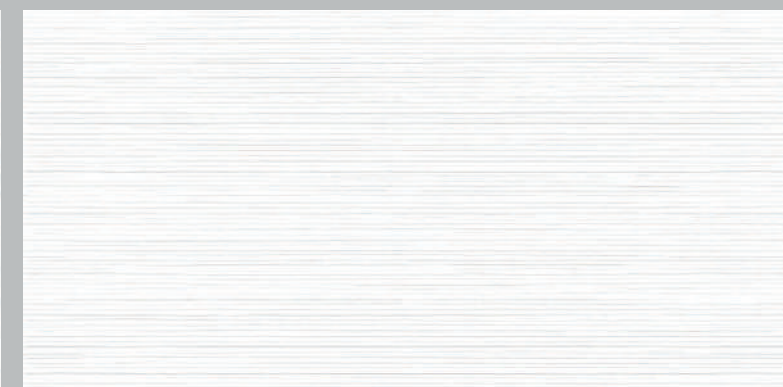
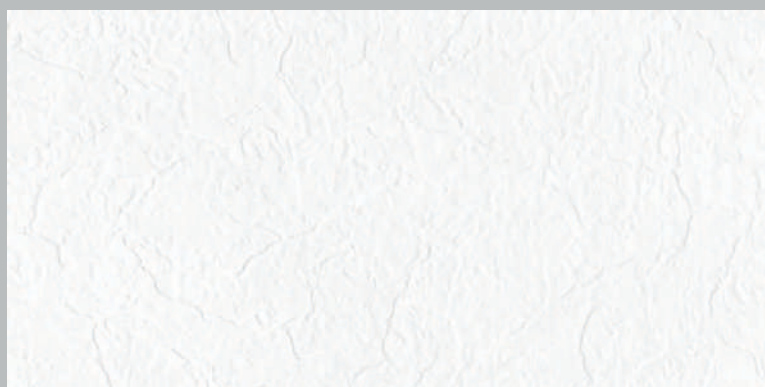
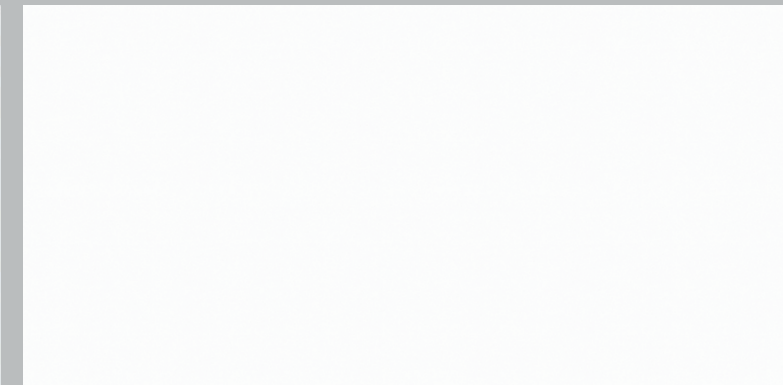
MATT FINISH



600x1200mm

POLISHED FINISH

MATT FINISH



STONE PUNCH

LINEA PUNCH



STRAPES PUNCH



SNOW WHITE
[POLISHED FINISH]



OLIVE

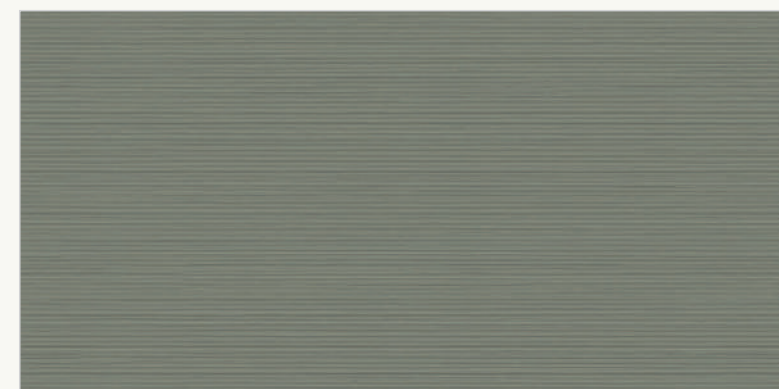
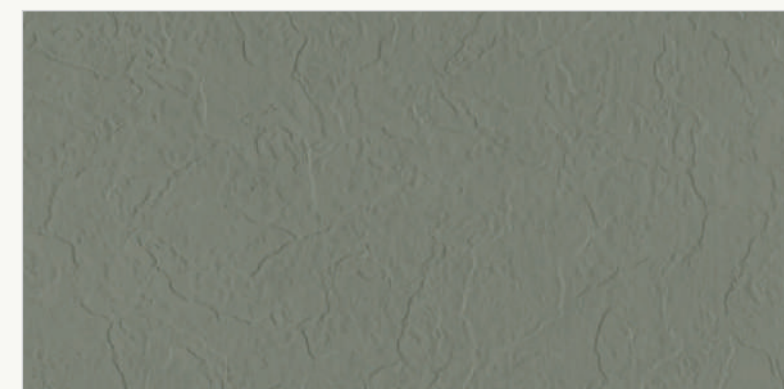


600x1200mm

● POLISHED FINISH



● MATT FINISH



● STONE PUNCH

● LINEA PUNCH



● STRAPES PUNCH

- CHEMICAL RESISTANCE
- MAINTENANCE FREE
- HIGH STRENGTH

LARGEST PAVILION OF FULLBODY TILES

600x600mm

● POLISHED FINISH



● MATT FINISH



● ROCK PUNCH



PURE BLACK

600x600mm

● POLISHED FINISH



PURE BLACK
[POLISHED FINISH]

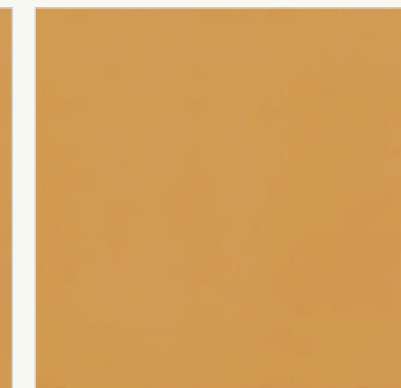
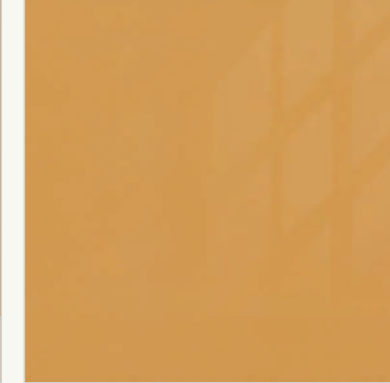
JAISALMER

600x1200mm | 600x600mm

● POLISHED FINISH



● POLISHED FINISH



● MATT FINISH

● MATT FINISH



JAISALMER
[POLISHED FINISH]

600x1200mm

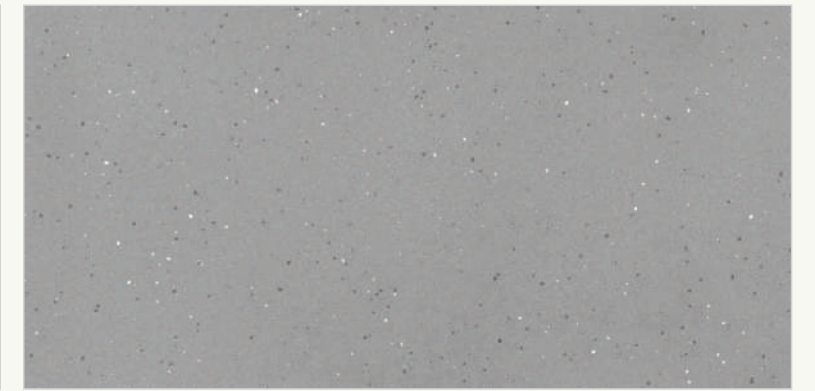
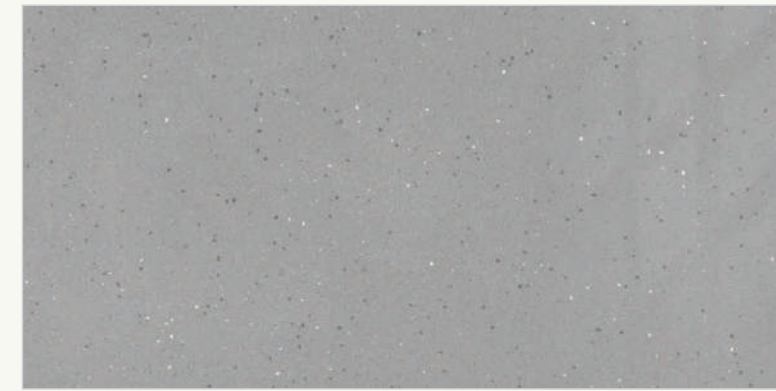
**LARGEST PAVILION OF
FULLBODY TILES**



COTTON

● POLISHED FINISH COTTON

● MATT FINISH



CADET

● POLISHED FINISH CADET

● MATT FINISH



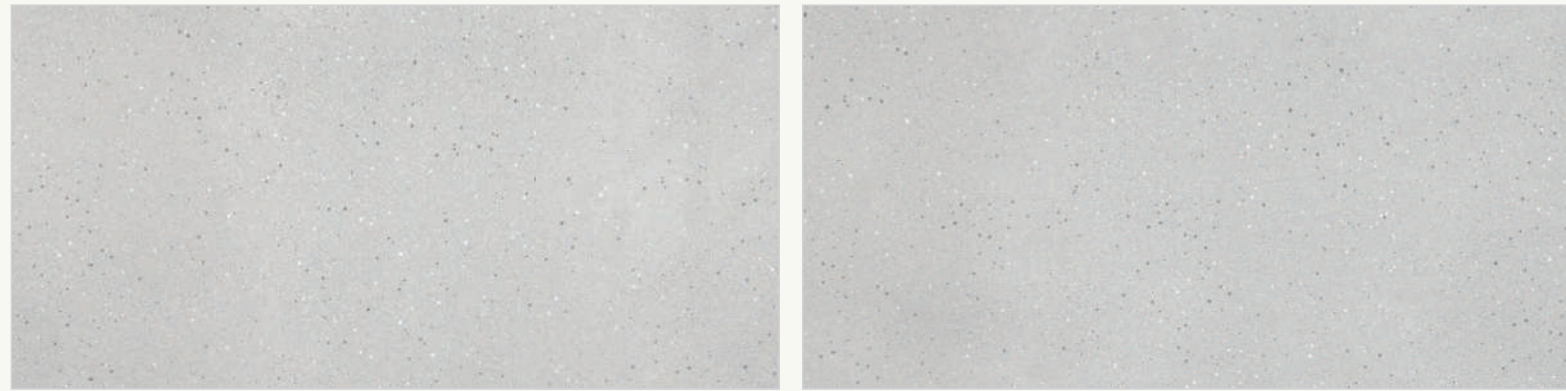
COTTON
[MATT FINISH]



CADET
[GLOSSY FINISH]

600x1200mm

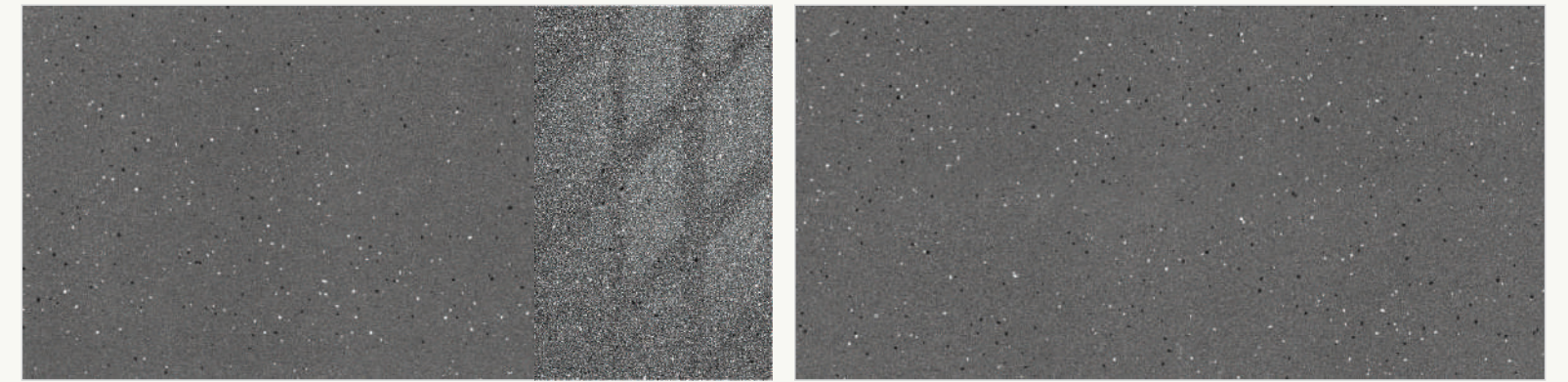
**LARGEST PAVILION OF
FULLBODY TILES**



SILVER

● POLISHED FINISH SILVER

● MATT FINISH



LEAD

● POLISHED FINISH LEAD

● MATT FINISH



SILVER & LEAD
[GLOSSY FINISH]



LEAD
[MATT FINISH]

600x1200mm

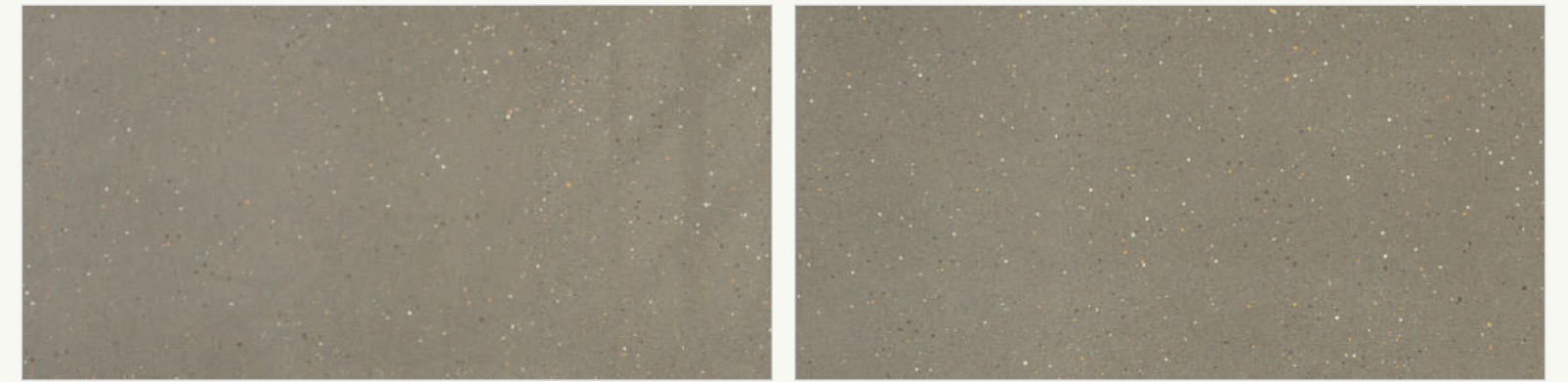
LARGEST PAVILION OF
FULLBODY TILES



VANILLA

● POLISHED FINISH VANILLA

● MATT FINISH



HAZEL

● POLISHED FINISH HAZEL

● MATT FINISH



VANILLA
[MATT FINISH]



HAZEL
[GLOSSY FINISH]

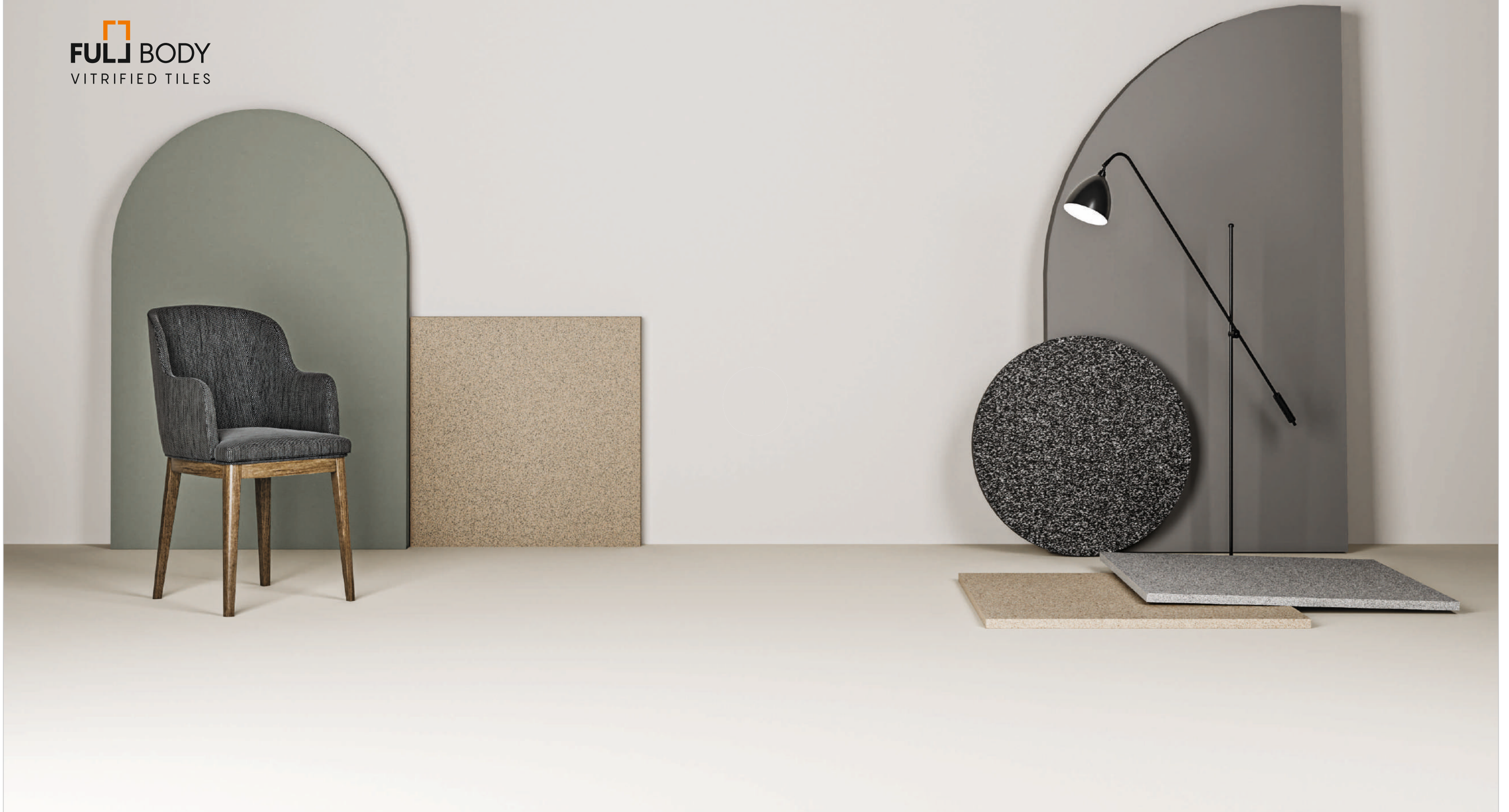
→ ←
15MM

600X600MM

**INTRODUCING THE DAWN OF
ERA FOR EXCEPTIONAL SURFACE.**

Meticulously designed tiles enchant with
sumptuous detailing and stunning color palettes.

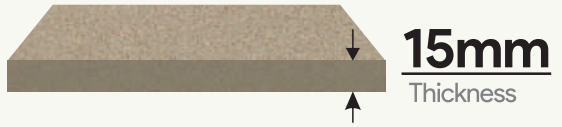
FULJ BODY
VITRIFIED TILES



COOKIE

600x600mm

● MATT FINISH



HIGH
STRENGTH



MAINTENANCE
FREE



CHEMICAL
RESISTANCE

FULL BODY
VITRIFIED TILES

LARGEST PAVILION OF
FULLBODY TILES

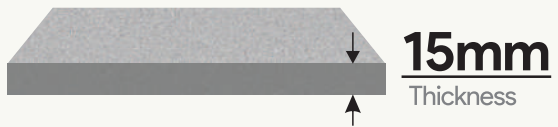
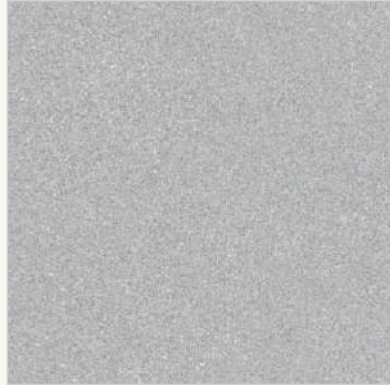


COOKIE
[MATT FINISH]

DOLPHIN

600x600mm

● MATT FINISH



HIGH STRENGTH



MAINTENANCE FREE



CHEMICAL RESISTANCE

FULL BODY
VITRIFIED TILES

LARGEST PAVILION OF FULLBODY TILES



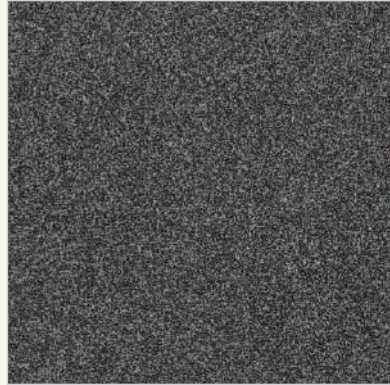
DOLPHIN
[MATT FINISH]



GRAPHITE

600x600mm

● MATT FINISH



FULL BODY
VITRIFIED TILES

LARGEST PAVILION OF
FULLBODY TILES



GRAPHITE
[MATT FINISH]



HIGH
STRENGTH



MAINTENANCE
FREE

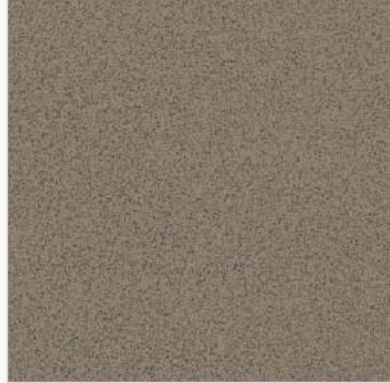


CHEMICAL
RESISTANCE

MUSHROOM

600x600mm

● MATT FINISH



FULL BODY
VITRIFIED TILES

**LARGEST PAVILION OF
FULLBODY TILES**



MUSHROOM
[MATT FINISH]



HIGH
STRENGTH



MAINTENANCE
FREE

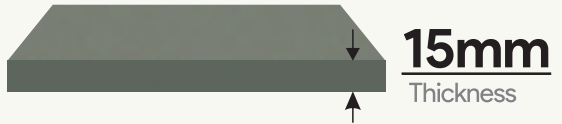
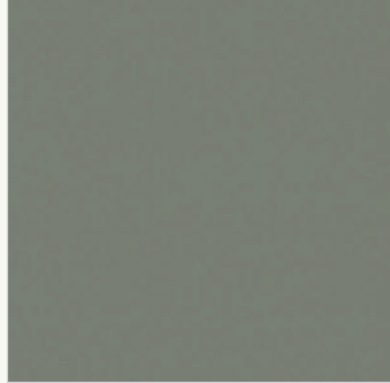


CHEMICAL
RESISTANCE

OLIVE

600x600mm

● MATT FINISH



FULL BODY
VITRIFIED TILES

**LARGEST PAVILION OF
FULLBODY TILES**



HIGH
STRENGTH



MAINTENANCE
FREE



CHEMICAL
RESISTANCE

OLIVE
[MATT FINISH]

SLATE GREY

600x600mm

● MATT FINISH



FULJ BODY
VITRIFIED TILES

**LARGEST PAVILION OF
FULLBODY TILES**



HIGH
STRENGTH



MAINTENANCE
FREE



CHEMICAL
RESISTANCE

SLATE GREY
[MATT FINISH]

→ ←
9MM

300X1200MM | 600X1200MM

UNVEILING THE NEW EPOCH
FOR EXTRAORDINARY PRODUCT

Exquisitely crafted tiles have intricate designs and
captivating color combinations.



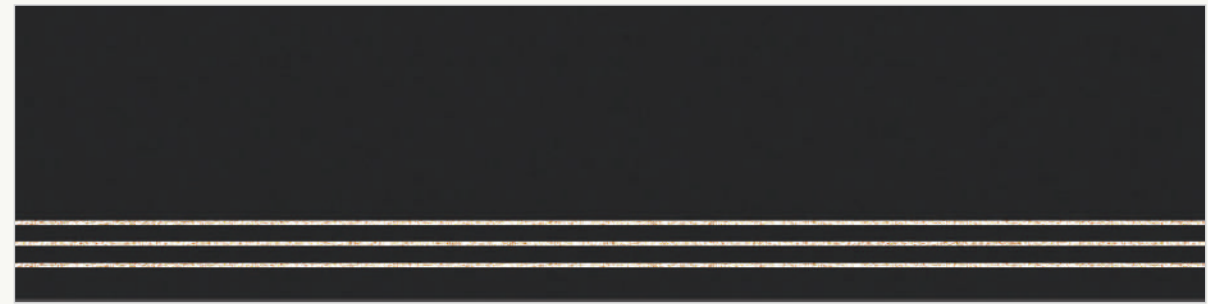
300x1200mm

STEP Collection

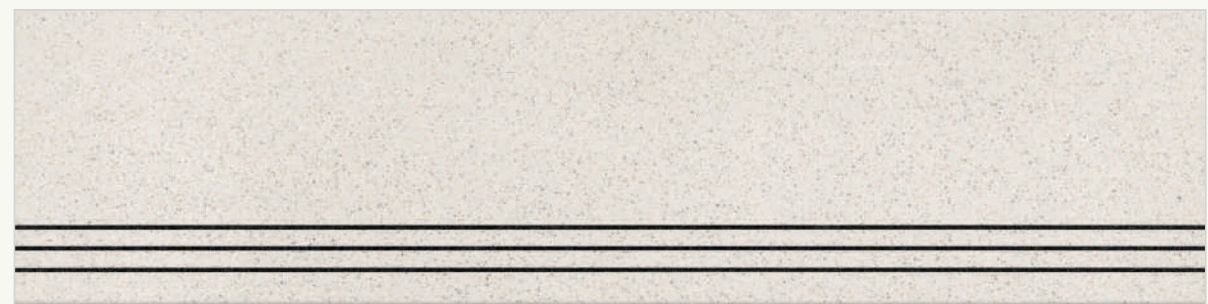
LARGEST PAVILION OF
FULLBODY TILES



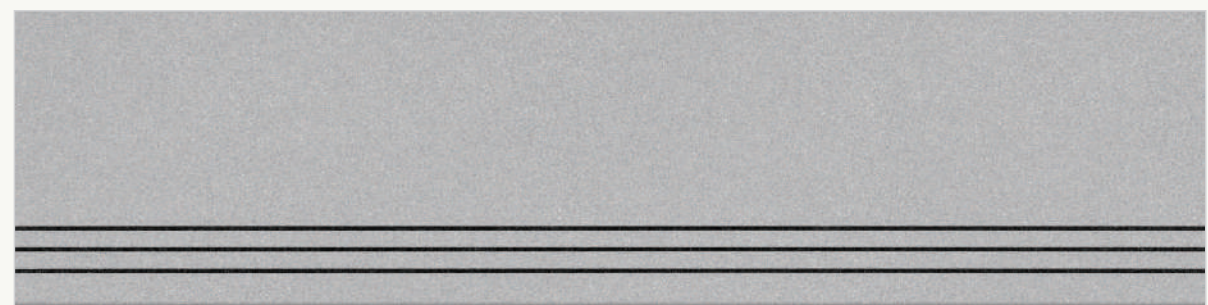
APRICOT ● MATT FINISH



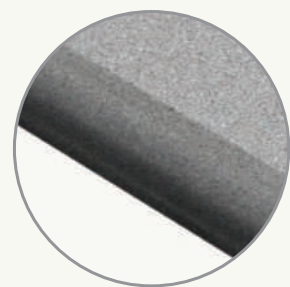
CHARCOAL BLACK ● MATT FINISH



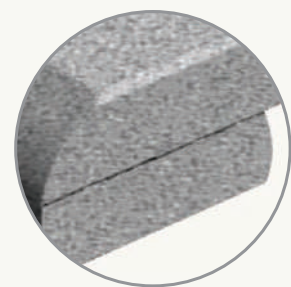
DOLOMINE ● MATT FINISH



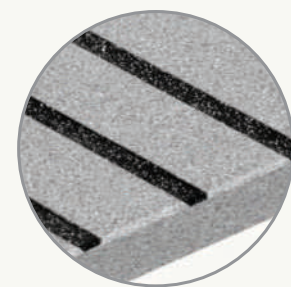
DOLPHIN ● MATT FINISH



BULL NOSE
MOULDING



SANDWICH



GROOVE WITH
EPOXY FILLING



DOLPHIN
[MATT FINISH]

300x1200mm



LARGEST PAVILION OF
FULLBODY TILES



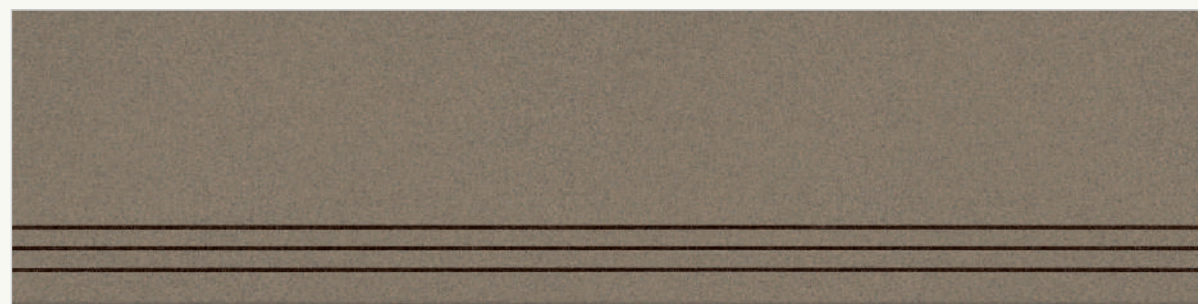
BOURBON

● MATT FINISH



GRAPHITE

● MATT FINISH



MUSHROOM

● MATT FINISH

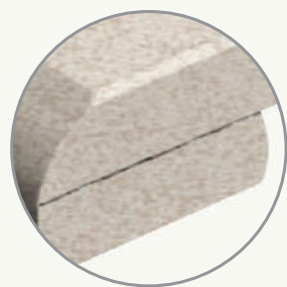


BUTTER

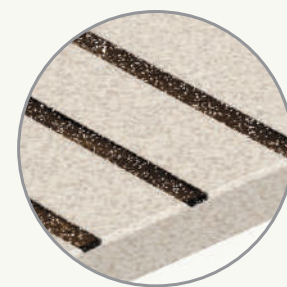
● MATT FINISH



BULL NOSE
MOULDING



SANDWICH



GROOVE WITH
EPOXY FILLING



GRAPHITE
[MATT FINISH]

600x1200mm

Chromatic

SERIES

LARGEST PAVILION OF FULLBODY TILES



COBALT BLUE

● RUSTIC FINISH



CYAN

● RUSTIC FINISH



HIGH STRENGTH



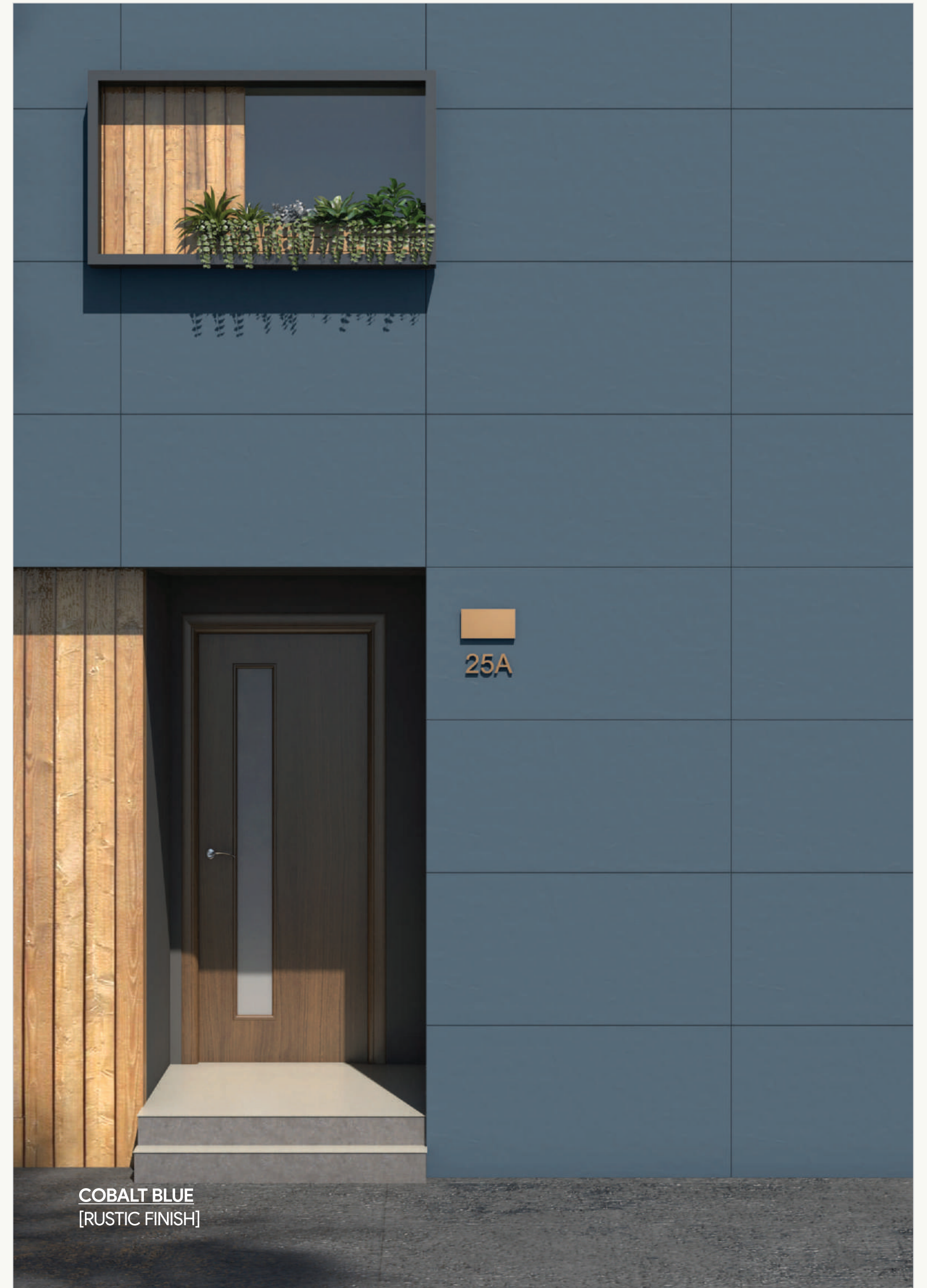
MAINTENANCE FREE



CHEMICAL RESISTANCE



CYAN
[RUSTIC FINISH]



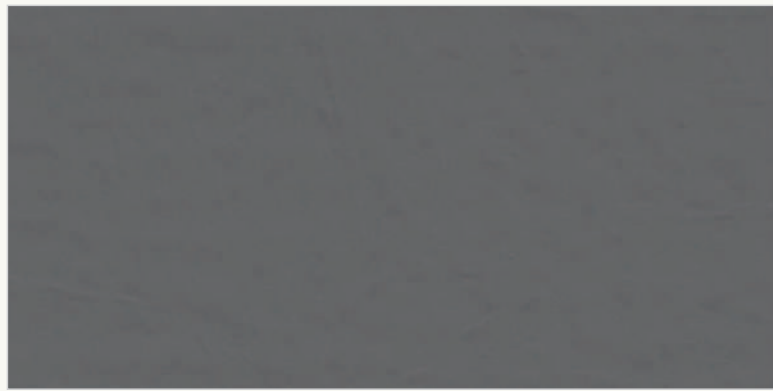
COBALT BLUE
[RUSTIC FINISH]

600x1200mm

Chromatic

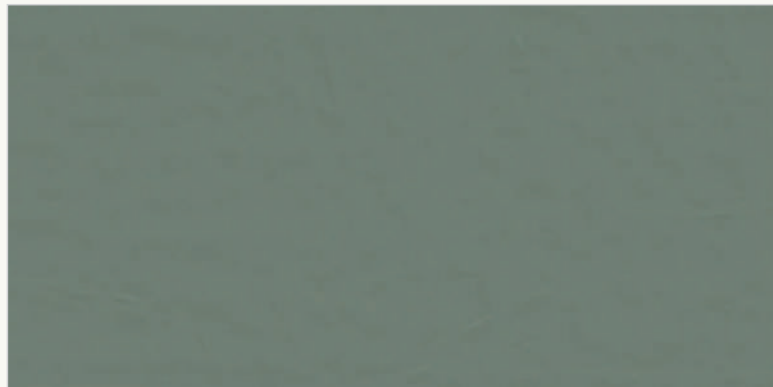
SERIES

LARGEST PAVILION OF FULLBODY TILES



DUSK

● RUSTIC FINISH



EMERALD

● RUSTIC FINISH



HIGH STRENGTH



MAINTENANCE FREE



CHEMICAL RESISTANCE



EMERALD - TENDER
[RUSTIC FINISH]



DUSK - TENDER
[RUSTIC FINISH]

600x1200mm

Chromatic

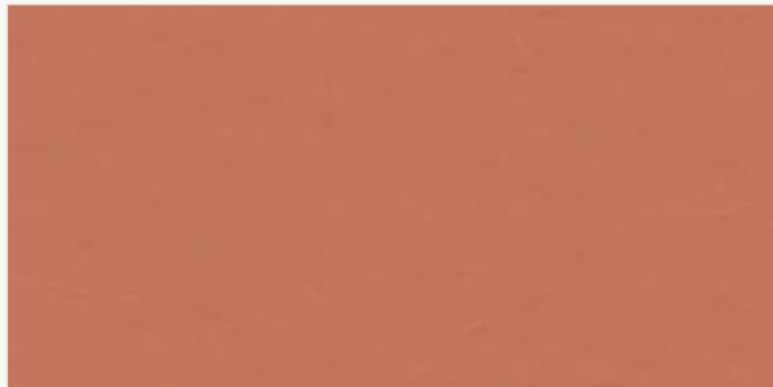
SERIES

LARGEST PAVILION OF FULLBODY TILES



MAIZE

● RUSTIC FINISH



FLARE

● RUSTIC FINISH



HIGH STRENGTH



MAINTENANCE FREE



CHEMICAL RESISTANCE



FLARE
[RUSTIC FINISH]



MAIZE
[RUSTIC FINISH]

600x1200mm

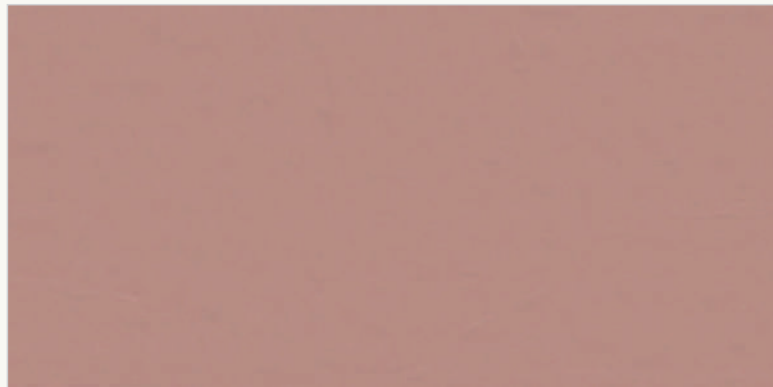
Chromatic

SERIES



TENDER

● RUSTIC FINISH



SALMON

● RUSTIC FINISH



HIGH
STRENGTH



MAINTENANCE
FREE



CHEMICAL
RESISTANCE



LARGEST PAVILION OF FULLBODY TILES



Technical Specification

TECHNICAL DETAILS	STANDARD AS PER ISO-13006/EN176 GROUP BIa	MEAN VALUE OF FULL BODY VITRIFIED TILES	METHOD OF TEST
Deviation In Length & Width	± 0.60%	± 0.10%	ISO-10545-2
Deviation In Thickness	+ 5.00%	+2.00%	ISO-10545-2
Straightness Of Sides	± 0.50%	± 0.10%	ISO-10545-2
Rectangularity	+ 0.60%	± 0.10%	ISO-10545-2
Surface Flatness	± 0.50%	± 0.10%	ISO-10545-2
Glossiness	Gloss Meter	Min. 90%	Glossometer
Water Absorption	≤ 0.50%	E ≤ 0.03%	ISO-10545-3
Breaking Strength	1300 N	1800 N	ISO-10545-4
Abrasion Resistance	Max. 175mm	Max. 145mm ³	ISO-10545-6
Moh's Hardness	Min. 6	≤ 6*	EN101
Frost Resistance	Frost Proof	Frost Proof	ISO-10545-12
Thermal Shock	No Damage	No Damage	ISO-10545-9
Moisture Expansion	Nil	Nil	ISO-10545-10
Thermal Expansion	<9 x 10 ⁻⁶	< 6 x 10 ⁻⁶	ISO-10545-8
Resistance of House Hold Chemical	No Damage	No Damage*	ISO-10545-13
Stain Resistance	Resistance	Resistance*	ISO-10545-14
Slip Resistance(friction Co Efficient)	> 0.40	> 0.40	ISO-10545-17

Packing Details

SIZE	PCS./BOX	WEIGHT / BOX (Approx)		COVERAGE AREA / BOX
		POLISHED	MATT	
800x1600mm	2 Pcs.	51 Kg.	55 Kg.	2.56 mtr ²
600x1200mm	2 Pcs.	27.5 Kg.	29.5 Kg.	1.44 mtr ²
600x600mm (9mm)	4 Pcs.	26.5 Kg.	28.5 Kg.	1.44 mtr ²
600x600mm (15mm)	2 Pcs.	N/A	23.5 Kg.	0.72 mtr ²
300x1200mm (Full Body Stap)	2 Pcs.	16.5 Kg.	16.5 Kg.	0.72 mtr ²